

Vega / Blaze

Firmware Upgrading Procedure

Operating Manual – English 2.01



Introduction

This document will describe the steps involved to successfully upgrade the Vega / Blaze range of instruments with the latest firmware. All Vega / Blaze instruments have a RS232 communications port as standard which will allow the connection of the instrument to a computer. If your computer does not have a RS232 communication port then an external RS232 to USB converter cable will have to be used.

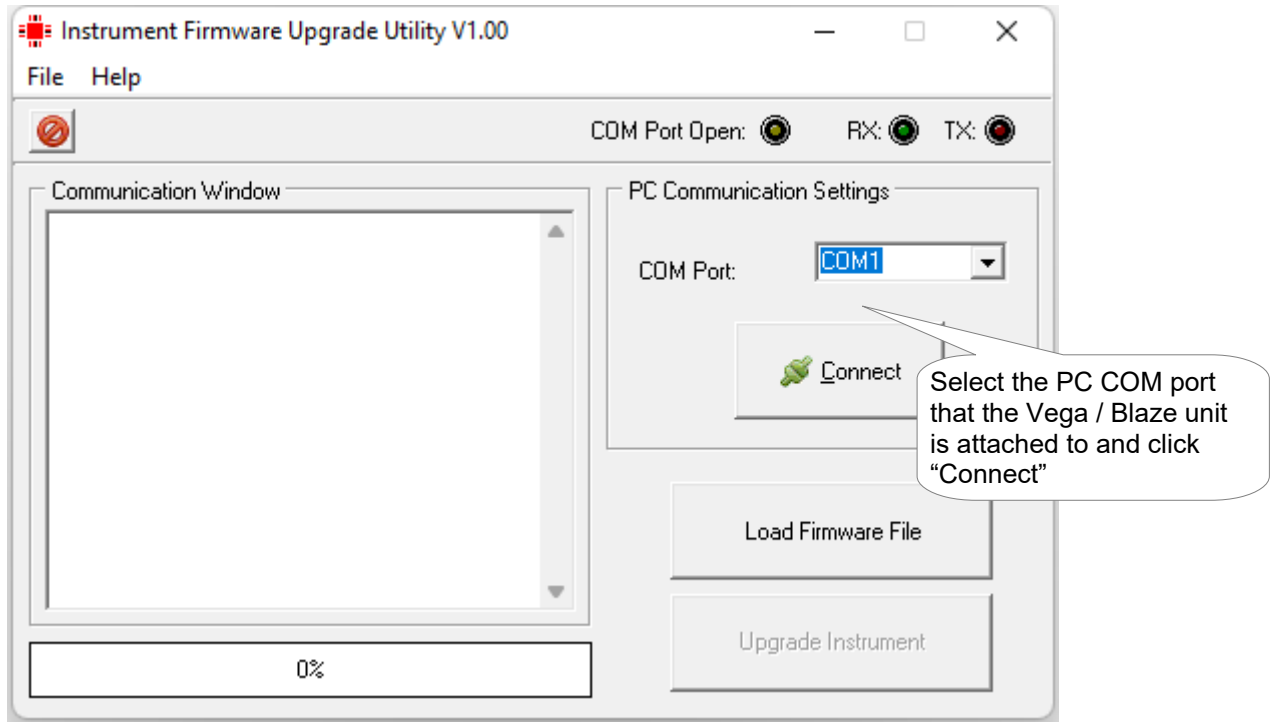
Please follow the steps below in order to successfully upgrade your instrument.

- 1) Connect the RS232 port on the Vega / Blaze instrument to the PC RS232 port as described in the table below. If the computer does not have a RS232 port then an external RS232 to USB converter will have to be used. An external power source of between 8 to 30Vdc must be connected to the Vega / Blaze instruments positive supply (Pin 1) and negative supply (Pin 2).

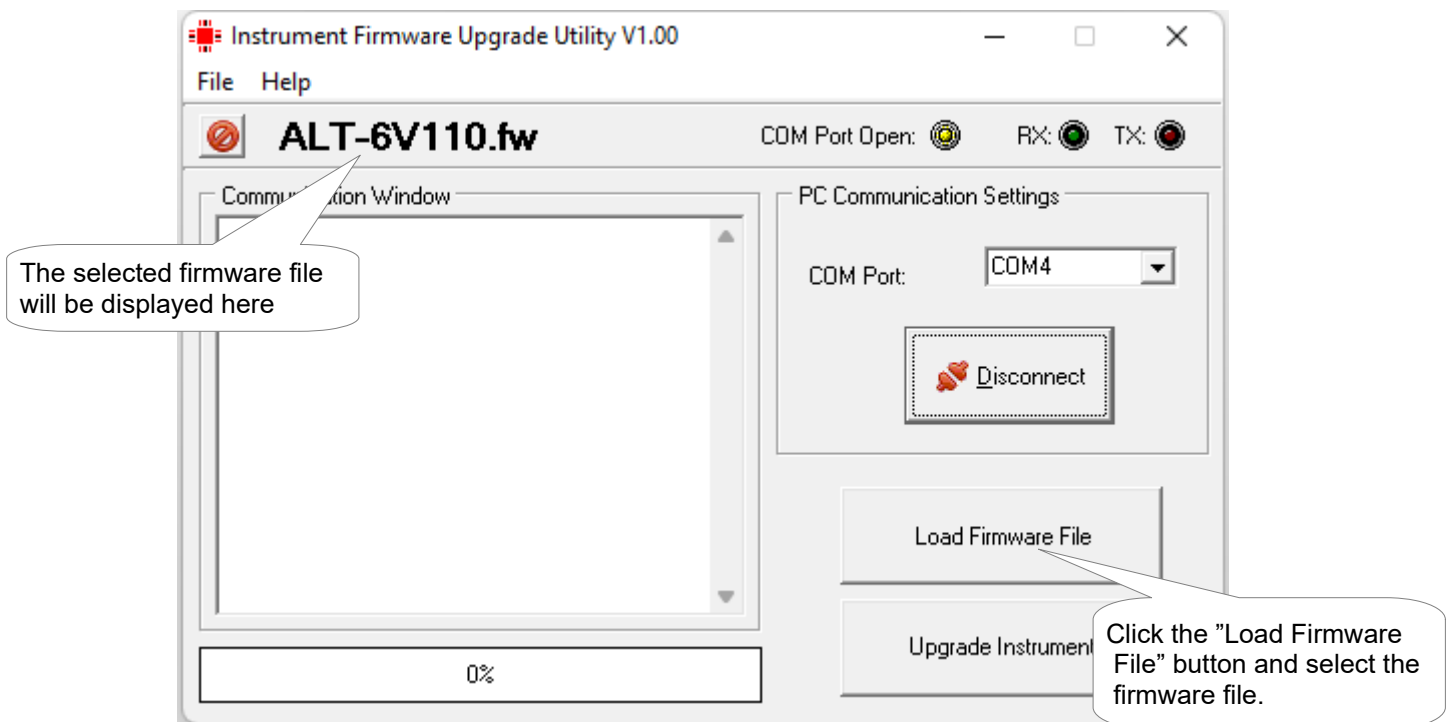
PC D9 Female Pin	Vega / Blaze Instrument Cable
Pin 2	Pin 3 (RS232 TXD)
Pin 3	Pin 4 (RS232 RXD)
Pin 5	Pin 2 (Gnd)

- 2) Download the Vega or Blaze firmware package. Unzip the package to a known location on your hard drive. The Vega / Blaze firmware files have the model number with the extension .fw. The programming application is called IFUU (Instrument Firmware Upgrade Utility) and is located in the same directory as the firmware files.

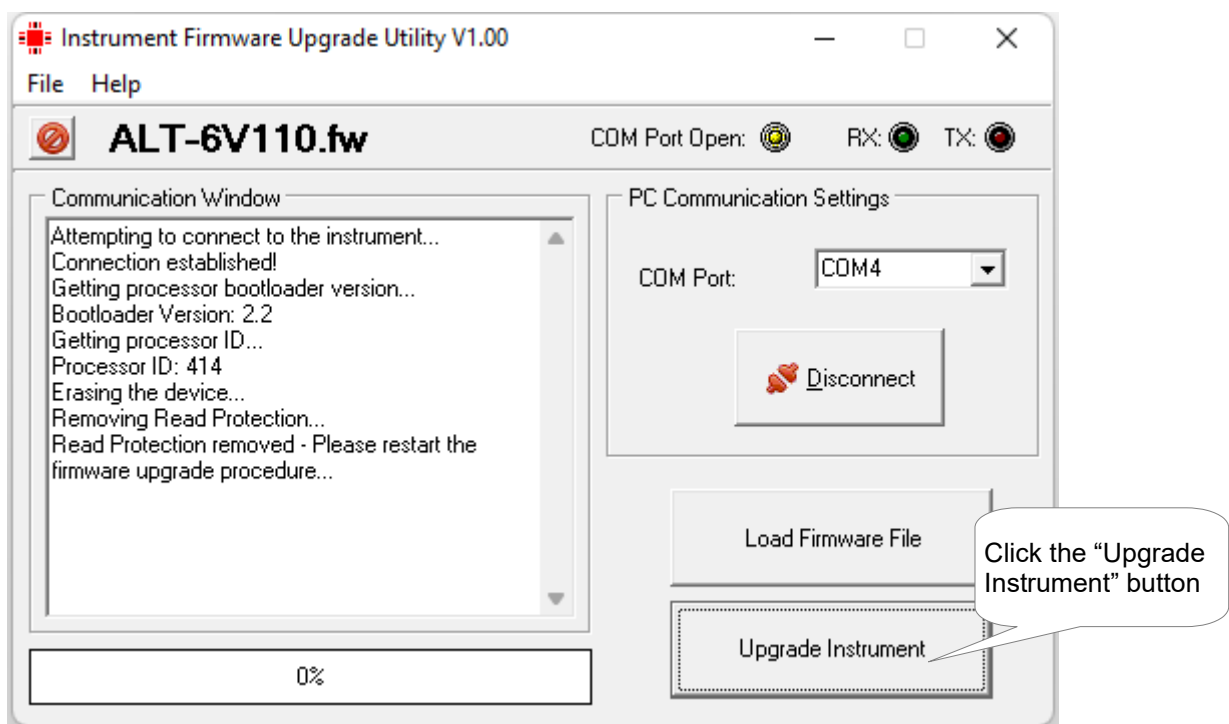
- 3) Run the IFUU application, select the PC COM port that the instrument is connected to and click “Connect”.



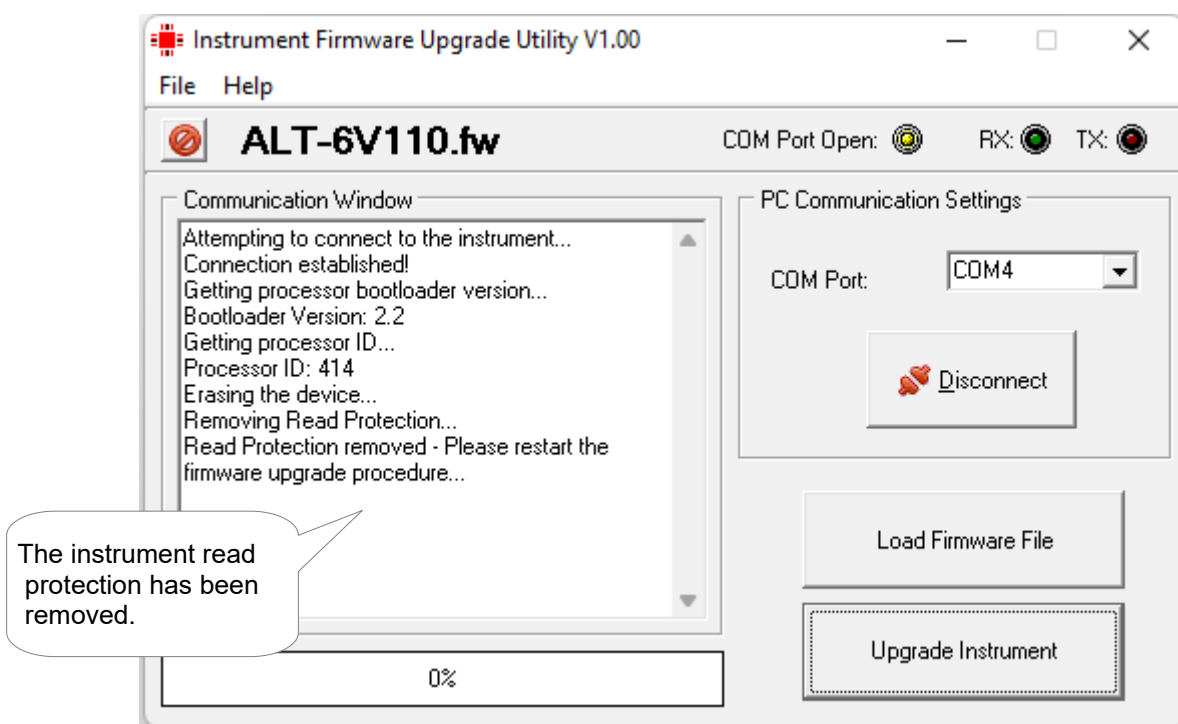
- 4) Apply power while pressing the F2 / Down key on the Vega / Blaze instrument. The Vega / Blaze display will be black and it will look like it is turned off.
- 5) Click the “Load Firmware File” button, navigate to the directory where the Vega / Blaze firmware files reside and select the correct model firmware. The selected file name is shown in the status bar.



6) Click the “Upgrade Instrument” button.

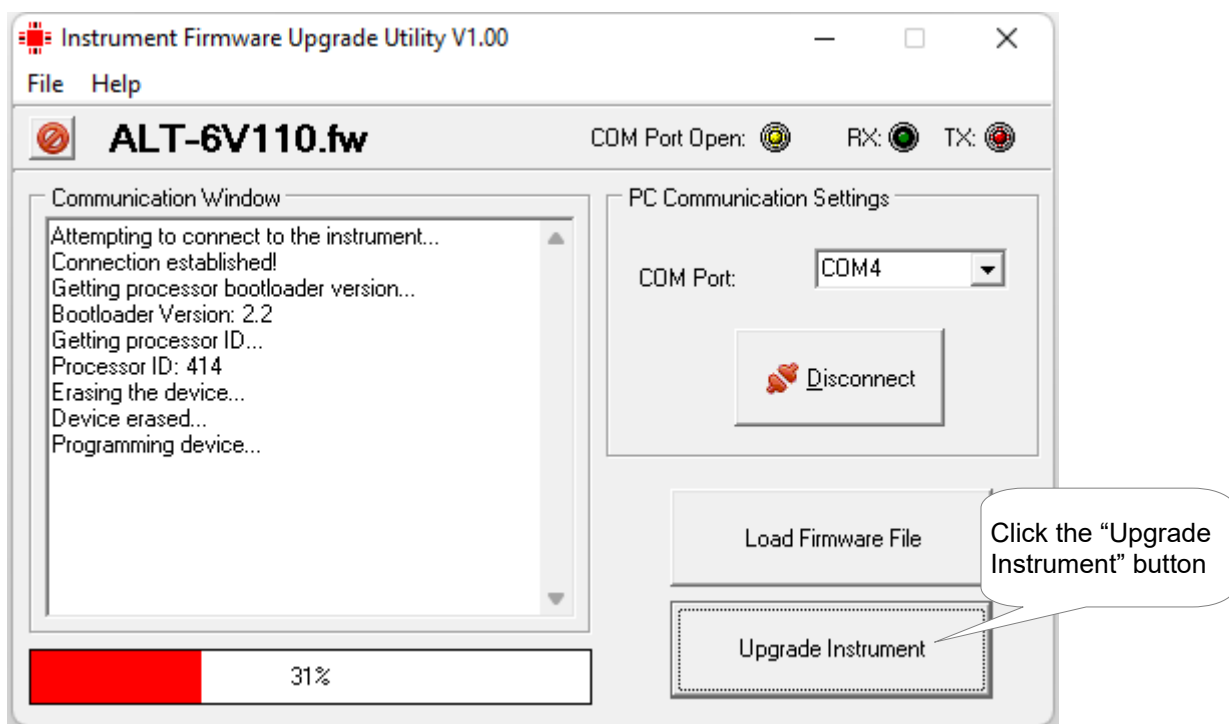


7) The read protection has to be removed from the instrument before programming can take place. If you see the below screen then the read protection has been removed and the instrument is ready for programming.

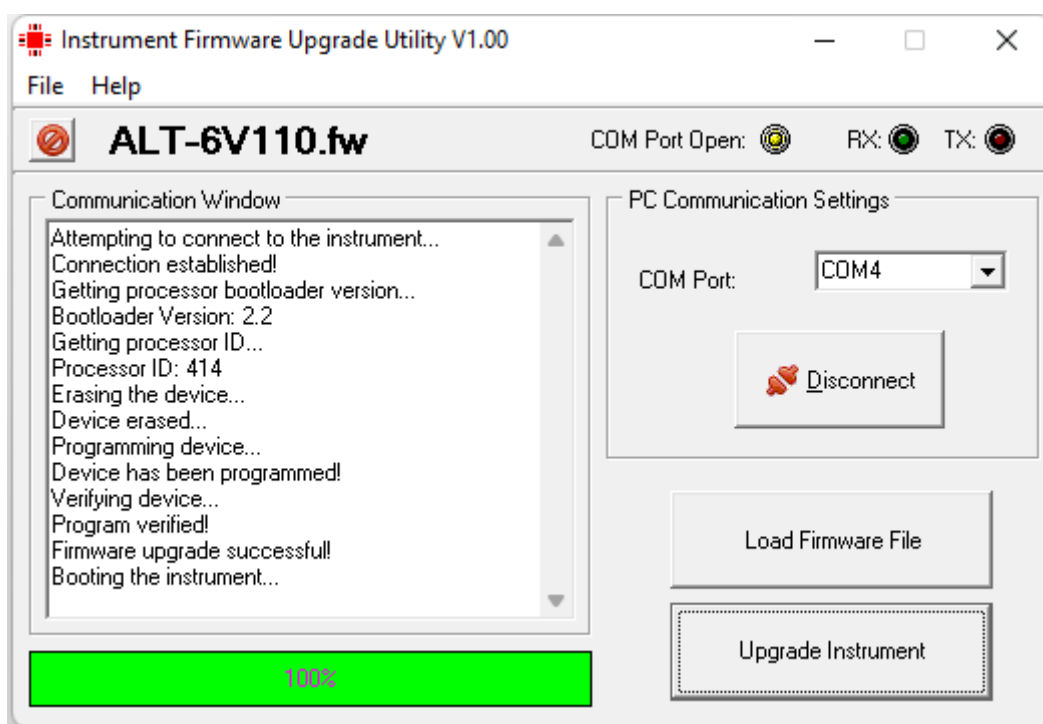


- 8) Power off the instrument.
- 9) Apply power while pressing the F2 / Down key on the Vega / Blaze instrument. The Vega / Blaze display will be black and it will look like it is turned off.

10) Click the “Upgrade Instrument” button. The instrument will begin to load the new firmware.



11) Once the code has been loaded and verified then the below screen will be shown. Make sure that the progress bar is green and that it has successfully completed the operation. Click the exit button to exit the IFUU application.



12) Power the instrument off and back on again. Verify that the correct version of code has been loaded into the instrument by checking the version number on the start up screen. It may be necessary to load factory default settings on the Vega / Blaze unit by pressing and holding both the F1 button and Rotary control when the power is been applied.