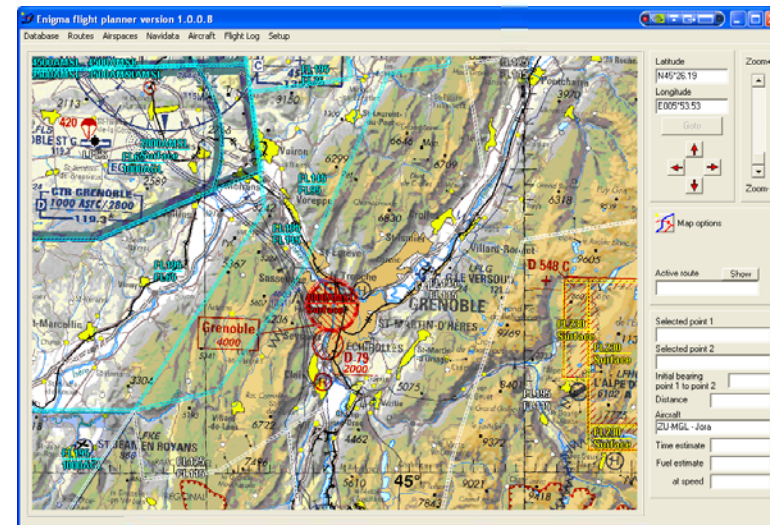


MGL Avionics EFIS Aviation Database interface

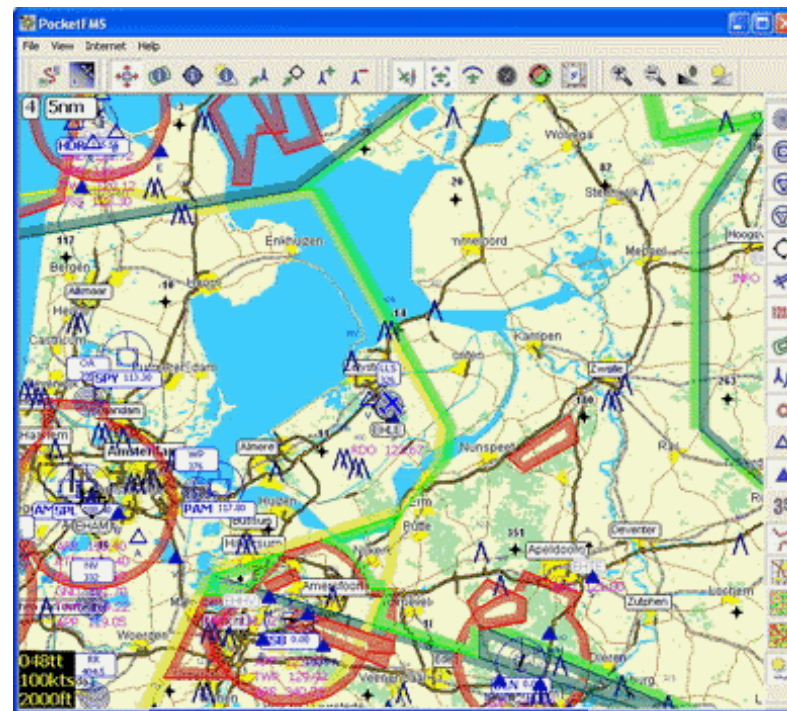
Data structure

The system uses a single navigation database file which contains waypoints, airport information and airspace information, plus it makes provision for a large amount of additional information which may be utilized in future such as airways, IFR approaches and departures and more.

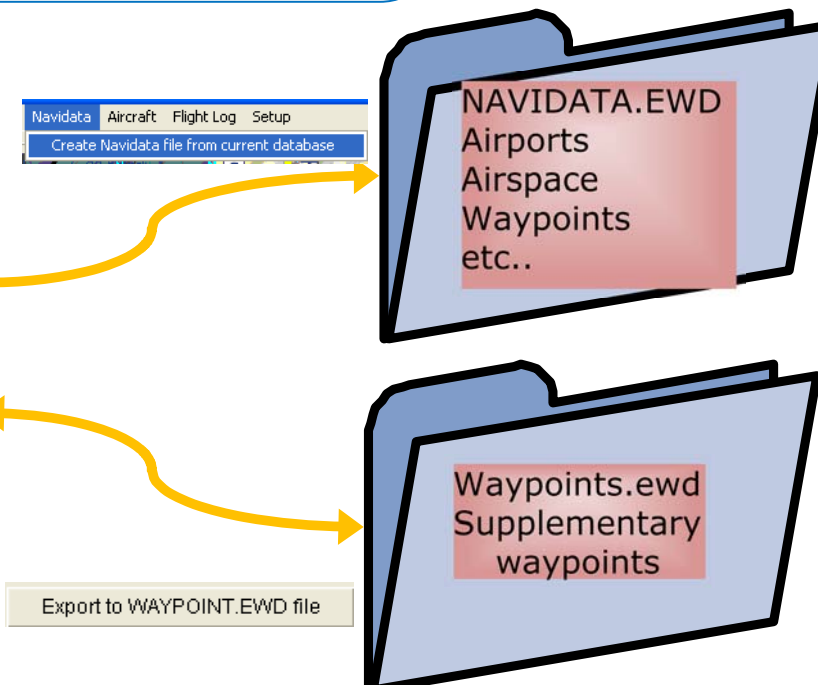
The Navidata.ewd file is not directly editable and is created either by the PocketFMS application or Enigma Flight Planner version 1.0.0.8 or higher.



MGL FlightPlanner Program
(Free)



PocketFMS Program
(requires subscription)



Supplementary waypoints work just like fixed Navidata waypoints except they show in a different color in the Waypoint manager or "Goto" screen and they can be edited.

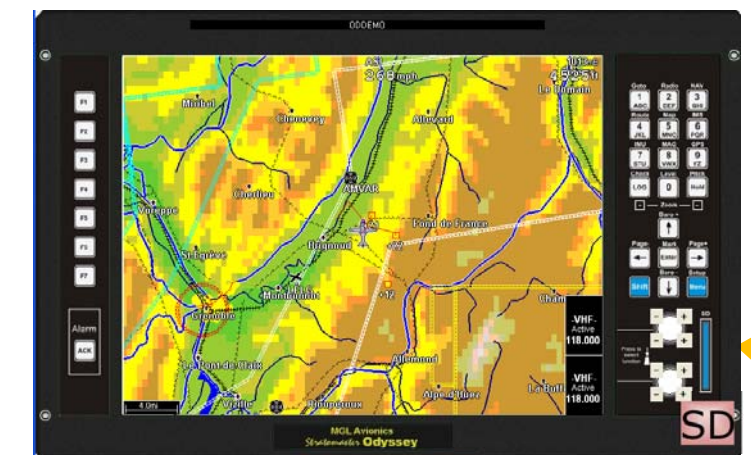


Data protection

Navidata files created with PocketFMS can only be used on authorized Enigma instruments. You can authorize your Enigma(s) if you have a valid PocketFMS subscription. PocketFMS data can be used without authorization by PocketFMS on the Enigma simulator. Navidata files created with Enigma Flight Planner are open format and can be used on any Enigma.

File location on EFIS

The Navidata.ewd database can either be installed in the Enigma internal Flash memory if size allows this or else it can be placed on your SD card. If the Navidata.ewd file is found on the SD card, it will be used and any internal Navidata.ewd file will be ignored.



ODYSSEY



SD Card



ENIGMA

